

GoldenEar's Award-Winning Triton Five & Triton Seven Towers

"They absolutely rock the speaker world's foundation to the core ... delivering the kind of musical bliss some pay upwards of \$10,000 for" – Caleb Denison, *Digital Trends* on the Triton Five

"Stunning ... Scores a Perfect 10"

– Steve Guttenberg, *CNET The Audiophile* on the Triton Seven

GoldenEar's Triton Towers have set the audio world on its proverbial ear with extraordinary sound quality, elegant styling and unequalled value. They have earned an incredible series of awards and honors all around the world. Tritons are the latest signature creation of Sandy Gross, whose Grand Prix Award winning loudspeakers have been impressing and delighting reviewers and listeners for over 40 years. Incorporating cutting-edge technologies like High Velocity Folded Ribbon tweeters, advanced technology drivers with our highly evolved and sophisticated bass-loading technology, linear phase crossover networks and inertially-balanced quadratic planar infrasonic radiators, they are, in the words of *Stereophile's* Robert Deutsch, *"the holy grail of audio that we all seek."* Tritons will absolutely bring all your music and movies to life!

"The value for the money here is clear off the charts"

– Chris Martens, *HiFi+* on the Triton Five



Triton Five Tower

Triton Seven Tower

SOME OF GOLDENEAR'S EXTRAORDINARY SERIES OF AWARDS



THE CUTTING-EDGE TECHNOLOGY BEHIND THE TRITON FIVE AND TRITON SEVEN

Dual 6" High-Definition Cast-Basket Bass/Midrange Drivers in a D'Appolito Array

Linear-Phase Balanced Crossover Network

High-Velocity Folded Ribbon Tweeter (HVFR™)

Angled Front Baffle to Precisely Align and Focus the Driver Array to Ear Level

Frequency Dependent Damping Bass Loading

Non-Parallel Front and Rear Baffles and Side Cabinet Walls to Better Control Internal Standing Waves

Four Inertially Balanced 8" Planar Infrasonic Radiators; Two on Each Side of Cabinet

Accelerometer Optimized Non-Resonant Cabinet



Triton Five Tower

Dual 5-1/4" High-Definition Cast-Basket Bass/Midrange Drivers in a D'Appolito Array

High-Velocity Folded Ribbon Tweeter (HVFR™)

Linear-Phase Crossover Network

Angled Front Baffle to Precisely Align and Focus the Driver Array to Ear Level

Frequency Dependent Damping Bass Loading

Non-Parallel Front and Rear Baffles and Side Cabinet Walls to Better Control Internal Standing Waves

Two Inertially Balanced 8" Planar Infrasonic Radiators; One on Each Side of Cabinet

Accelerometer Optimized Non-Resonant Cabinet



Triton Seven Tower

TRITON FIVE AND TRITON SEVEN HIGH-RESOLUTION TOWER LOUDSPEAKERS

The Triton Five and Triton Seven Towers bring Speaker-of-the-Year Award winning Triton Series performance into a more compact size and even more affordable price range. GoldenEar's Triton Towers have set new performance and value standards all around the world. The Triton Five and Triton Seven passive towers follow in this auspicious tradition. Although they are Tritons without built-in powered subwoofers, they still achieve superbly deep, subwoofer-like impactful bass performance by combining advanced technology drivers with our highly evolved and sophisticated Frequency Dependent Damping bass loading technology.

“Best Sound for the Money at CES 2015”

– Robert Harley and Neil Gader, *The Absolute Sound on the Triton Five*

Their unique cabinet shape is both acoustically purposeful as well as strikingly attractive. Its stylish rearward rake, in conjunction with the complex crossover, both aligns the driver array precisely for a coherent wave-launch directed at ear level at the listening position, as well as results in non-parallel front and rear baffles for better control of internal standing waves. And, of course, the non-parallel side cabinet walls and slanted top provide the same acoustical performance benefit, as well as looking great. Their precise and totally boxless imaging characteristics are further enhanced by the narrow front baffle, as well as the diffractionless designer grille cloth sock which adds additional sheer damping to the cabinet. In addition, the beautifully sculpted piano-gloss black base adds significantly to their dynamic stability.

“Forget \$60,000 Speakers, we'll take the GoldenEar Triton Seven ... it has totally nailed it”

– Caleb Denison, *Digital Trends on the Triton Seven*

Like the signature Triton Two, they combine a D'Appolito array of bass/midrange drivers, which surround the same, now famous, High Velocity Folded Ribbon Driver (HVFR™), used in all the Triton Towers. The HVFR™ tweeter functions by pressurizing the air, rather than pushing and pulling it, for much better impedance matching with the air in the room. This results in superb extension combined with a silky smooth non-fatiguing character, which is both unique and extraordinary. The spiderleg cast-basket bass/midrange drivers, newly developed at our Arnprior, Canada engineering facility, have been specifically designed for exceptionally long-throw for tremendous dynamic range and extraordinarily deep bass response.

“The Triton Seven System is absolutely magical ... a serious reference quality set of speakers”

– Darryl Wilkinson, *Sound & Vision*

In addition, their precisely curved cone combined with a specially formulated polypropylene cone material and unique apical glue bonding technique delivers superb high-definition midrange clarity and presence. Like the powered Tritons, they incorporate two (Triton Seven) or Four (Triton Five) side-mounted sub-bass radiators that are located on either side of the cabinet down near the floor for optimum coupling to the room.

“GoldenEar's new Triton Seven is downright unbelievable ... gets my vote for the high-end audio bargain of CES”

– Chris Martens, *HiFi+ on the Triton Seven*

The Tritons' high resolution sonic performance makes them perfect for the highest quality two channel systems as well as the best multi-channel music and home theater systems. As with all GoldenEar speakers, development work is conducted at our Arnprior engineering facility utilizing our full-size anechoic chamber, which is an exact duplicate of the chamber at the NRC in Ottawa, Canada, in combination with intense critical listening.

“Showstoppers ... they sounded obscenely good”

– Jerry Del Colliano, *HomeTheaterReview on the Triton Five*

TRITON FIVE SPECIFICATIONS*

Dimensions: Speaker: 6-5/8" W (front) x 8-1/8" W (rear) x 12-3/8" D x 44-1/4" H (height with base installed, no feet/spikes). Base: 11" W x 16-1/2" D. **Frequency Response:** 26 Hz – 35 kHz. **Efficiency:** 90 dB. **Nominal Impedance:** Compatible with 8 ohms. **Driver Complement:** Two 6" high-definition cast-basket bass/midrange drivers coupled to Four 8" planar sub-bass radiators, One High-Velocity Folded Ribbon (HVFR™) Tweeter. **Rec. Amp:** 15 – 400 watt/channel.

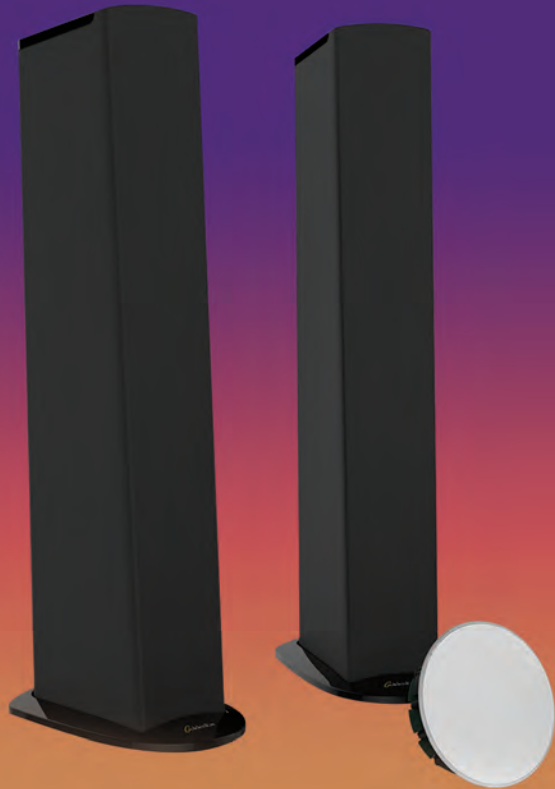
TRITON SEVEN SPECIFICATIONS*

Dimensions: Speaker: 5-3/4" W (front) x 7-1/4" W (rear) x 11" D x 40-1/4" H. Base: 10-1/2" W x 14-1/2" D. **Frequency Response:** 29 Hz – 35 kHz. **Efficiency:** 89 dB. **Nominal Impedance:** Compatible with 8 ohms. **Driver Complement:** Two 5-1/4" cast-spiderleg-basket bass/midrange drivers, Two 8" planar sub-bass radiators, One High-Velocity Folded Ribbon (HVFR™) Tweeter. **Rec. Amp:** 10 – 300 Watt/channel.

*Specifications are subject to change without notice.

TRITON FIVE AND TRITON SEVEN RECOMMENDED SYSTEM COMPONENTS

GoldenEar TritonCinema systems consist of a pair of Triton Towers, a SuperSat or SuperCenter center channel and two or more SuperSats, Aons or Invasas used as surrounds and/or height channels, and one or more ForceField subwoofers. Invasas are also perfectly matched for use as ceiling mounted height channels in advanced state-of-the-art no-compromise Atmos systems. Some advanced systems use Triton Towers as surrounds. Remember, GoldenEar engineers voice all of our speakers to the same high standards, so you can mix and match and always achieve perfect results.



CENTER CHANNELS

SuperCenter X, SuperCenter XL, SuperCenter Reference, SuperSat® 50C, SuperSat 60C, Invisa® SPS

SURROUNDS or HEIGHT CHANNELS

Aon 2, Aon 3, SuperSat 3, SuperSat 50, SuperSat 60, Invisa 525, Invisa 650, Invisa HTR 7000, Invisa MPX MultiPolar

SUBWOOFERS

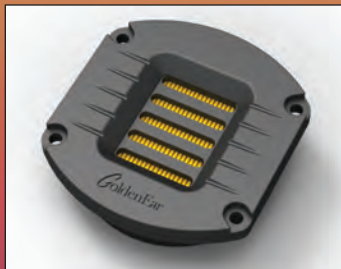
ForceField 3, ForceField 4, ForceField 5, SuperSub X, SuperSub XXL



THE TRITONS HAVE TRIUMPHED!

- Affordable Floorstanding Speaker of the Year: *HomeTheaterReview*
- Affordable Loudspeaker of the Year: *The Absolute Sound*
- Audio Product of the Year: *Sound & Vision*
- Best Floorstanding Speaker Award: *Secrets of Home Theater*
- Product of the Year Award: *Audiobolitics*
- Loudspeaker of the Year: *Stereophile*
- Editor's Choice Award: *Digital Trends*
- Product of the Year: *The Absolute Sound*
- Product of the Year: *Sound & Vision*
- Affordable Loudspeaker of the Year: *The Absolute Sound*
- Affordable Floorstanding Speaker of the Year: *HomeTheaterReview*
- Editor's Choice Greatest Overachiever: *The Perfect Vision*
- Speaker of the Year: *What HiFi*
- Top Pick of the Year: *Home Theater Magazine*
- Top Pick of the Year: *Sound & Vision*

STATE-OF-THE-ART GOLDENEAR TECHNOLOGY DRIVERS



HIGH-VELOCITY FOLDED RIBBON TWEETER (HVFR)

- Tweeter Diaphragm is a High Temperature Film
- High-Power Neodymium Magnets
- Squeezes/Pressurizes Air Instead of Pushing It
- Greater Control, Smoother More Extended Response
- Vanishingly Low Distortion
- Dramatically Improved Dynamic Range and Detail
- Superb Dispersion Characteristics
- Superior Impedance Match to Air



5.25" AND 6" HIGH-DEFINITION BASS/MIDRANGE DRIVER

- Designed with Exceptionally Long-Throw for Tremendous Dynamic Range and Extraordinarily Deep Bass
- Rigid Free-Flow Cast-Basket Chassis
- Proprietary Computer Optimized Cone Topology
- High-Gauss Magnet Assembly
- 1" High-Temperature Kapton Former Voice Coil
- Extremely Extended Resonant-Free Linear Frequency Response Characteristics



INFRASONIC PLANAR SUB-BASS RADIATORS

- Planar Radiators, Two for Triton Seven, Four for Triton Five
- Pressure-Coupled Loading Extends Usable Bass Performance to the Infrasonic Region
- Performs Like a well-Tuned Transmission Line but with Superior transient Performance and Control

GoldenEar Technology

www.goldenear.com

PO Box 141, Stevenson, MD 21153 (410) 998-9134

© GoldenEar Technology. All right reserved.

Reproduction in whole or in part without our express permission is prohibited.

