



AUDIOVECTOR

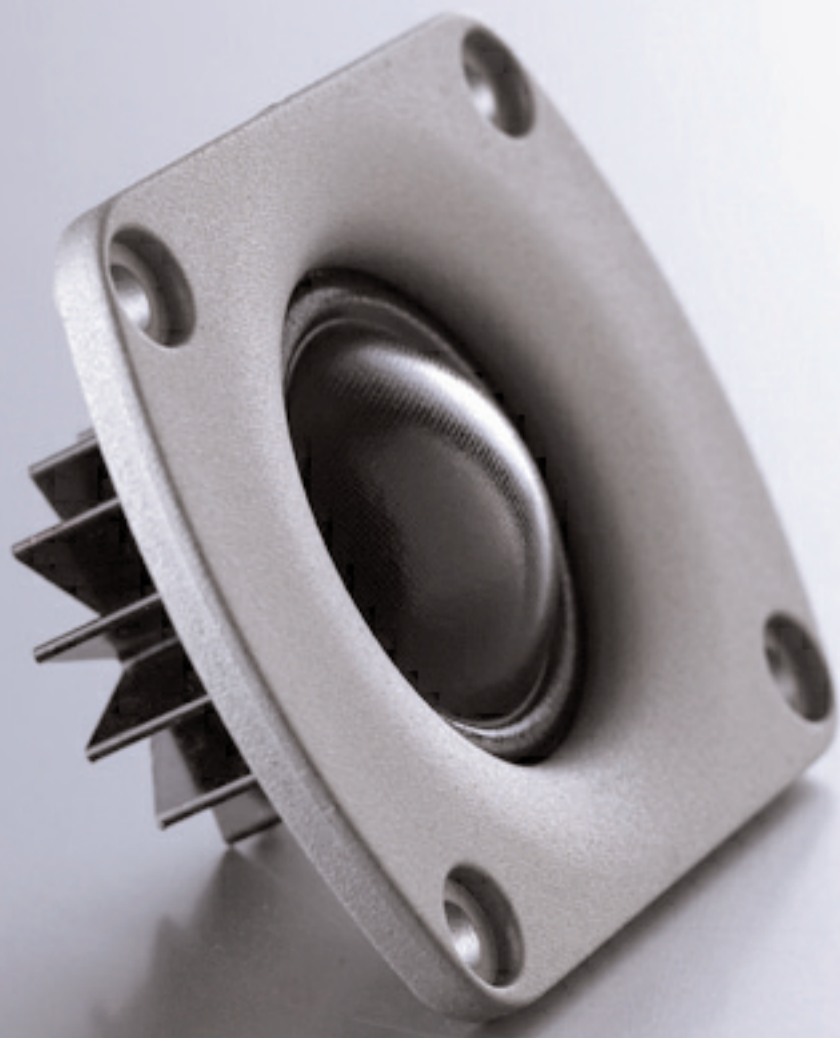


J U S T L I S T E N

NOBODY WAS EVER SORRY
FOR BUYING THE BEST

K-SERIES

„I COULD NOT FIND THE SPEAKER I HAD BEEN DREAMING OF, SO I HAD TO BUILD IT MYSELF“



This is what I had to do more than 20 years ago when I was searching for speakers to reproduce music faithfully.

Then, as now, Audiovector speakers are able bring you closer to live music than any other speaker.

The Audiovector sound is vivid, open, natural, powerful and yet sweet. We achieve this through inspired thinking, through the use of the finest and most advanced materials available and through excellent craftsmanship.

High quality in every respect, contemporary styling and innovative design are some of the code words of Audiovector.

SLIM, COMPACT SPEAKERS WITH POWERFUL BASS AND A BIG SOUND ARE NORMALLY CONTRADICTIONS. NOT ANYMORE.

With the K-series, we can now offer compact speakers, which, thanks to the latest driver technology and the implementation of the QWR-bass loading technology, will deliver a big, bold sound from very compact cabinets.


We invite you to visit one of the specialist Audiovector dealers and see, touch, relax and hear what Audiovector is all about.

Just Listen.

Ole Klifoth
Founder



THE AUDIOVECTOR K-SERIES: EXCELLENT FOR STEREO SURROUND SOUND



While the sound of a stereo system is 100% (do not accept less!), the sound is more than 60% of the experience when you watch a movie. Just try it yourself: Turn down the sound while watching and experience the result.



IUC

The Individual Upgrade Concept is unique to Audiovector. It allows you to upgrade your speakers to a more sophisticated version. And to install future improvements. This is what we mean when we say that all Audiovectors are future proof.



LCC

Audiovector's Low Compression Concept allows all moving parts of the speakers to move without restriction. The result is even the most delicate signals will reach your ears undistorted.

Elegant and beautifully crafted products with almost limitless dynamic range and, of course, reliability and ease of use. Audiovector's pioneering technologies allow you a free choice of model, future improvements or expansions, for the genre of film and music.



INSPIRED BY OUR
FAVOURITE PRINCIPLE:
PURE INNOVATION



The K3 series floorstanders are slim and elegant and yet they sound powerful. A simple technology was improved and adapted to the fast bass/mid drivers of the K3's: An intelligent new interpretation of rear horn loading does the trick: Small size and powerful bass. We call this technology QWR – Quarter Wave Resonance –technology.

“LISTENING TO MUSIC AND WATCHING FILMS
IS SOMETHING I HAVE ALWAYS LOVED”

OLE KLIFOTH



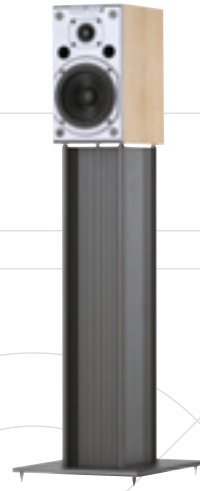
K3 SUPER

The best K3-speaker. Based on QWR technology. Resonance-dead lamination techniques. Drivers with huge magnets and membranes made from a mixture of glass fibres and carbon fibres. The sound of K3 Supers is powerful and fast, yet delicate and sweet.



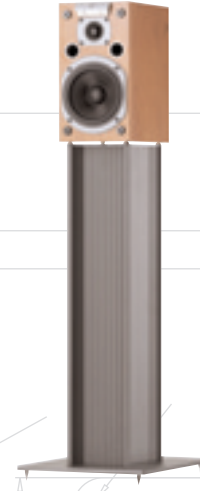
K3

The K3 is based on the same QWR technology and the same fine drivers as the K3 Super. But with simpler solutions with respect to cross-over, inner damping and cabinetry. The result is a fine dynamic performance with the ability to fill even big rooms with sound.



K1 SUPER

Although this speaker is really small, it will surprise you with its big bodied, dynamic sound. The best in the K1 series due to intelligent lamination technique and a totally inert cabinet. The drivers are fed through a sophisticated cross over.



K1

A simpler version of the K1 Super, but still an excellent performer, especially when you take its size into consideration. The same basic cabinet and the same high quality drivers. Very good on a wall bracket or a shelf. And even better on its dedicated AVEC stand.

K-X

This sweet little speaker goes directly on the wall and works equally well in a stereo system and as rear speakers in a surround sound system. The K-X shares its technology with the K1's. Can be switched between “direct field” and “diffuse field”. Both these options are very useful in surround sound systems. A truly flexible speaker.



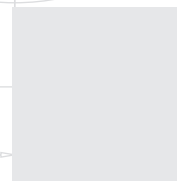
KC SUPER

60% of the signal in a surround sound system is reproduced by the centre speaker. The K-C Super is very dynamic and powerful in spite of its compact dimensions. Perfect match to K1 Supers and the K3 Supers. Cabinet lamination reduces distortion and results in a very clean and dynamic sound.



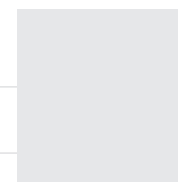
KC

A slightly simplified version of the K-C Super. Even without the laminated baffle and the sophisticated cross-over of the latter, this compact centre speaker will do an excellent job with both concerts and movies in conjunction with the K3's, a pair of K-X and a K-Sub.



K-SUB SUPER

This compact cube has a built-in 350W amplifier. It is effectively decoupled from the floor through a double isolation system and has a laminated baffle to control resonance around the chassis of the massive 10” bass driver. This compact woofer equally well with stereo and surround sound.



K-SUB

The K-Sub is similarly sized to the K-Sub Super. It also shares the double isolations system with its dearer sibling. The amplifier is 300 Watts and it shares all the flexible regulations with its bigger brother. A perfect match in stereo for K1's and a great surround sound performer.



EXCEPTIONAL PERFORMANCE
WITH ANY SOURCE MATERIAL

The K-Subs are fitted with high power amplifiers and heavy duty 10" drivers with a cast chassis and huge magnets.

TECHNOLOGY IN THE SERVICE OF PERFORMANCE

Audiovector speakers are designed to give you everything you would ever expect from a high quality product – but even more: Great, dramatic and moving experiences with movies and music.



The K-X can either be switched to work in direct mode (top) or in dipole mode (bottom), which is extremely useful for some types of home cinema installations.

Unlike most speakers, the Audiovector K-series uses an ultraslim grille-frame with semi transparent cloth. The result: Even with the grille-frame on, there is virtually no loss of information.

Good design is the art of combining functional design with thoughts which

A very powerful and dynamic driver: The Audiovector PC 1400 S

The direct drive filter unit with rhodium plated bi-wire binding posts and high quality components such as polycarbonate film capacitors. These features are typical for the quality of the Audiovector K-series and results in a detailed and clear sound.



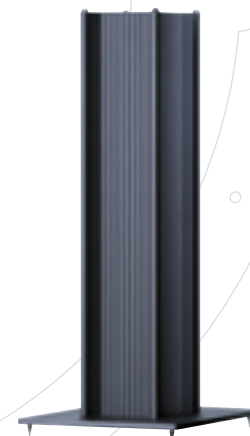
A carbon/cotton-fibre membrane, a powerful neodymium magnet with ferrofluid and a heat sink to keep it all cool results in a fast and precise reproduction of sound. The Audiovector T 1004.

The QWR loading principle of the K3's in schematic form. The QWR loading, along with the powerful bass drivers, result in excellent coupling to the air of the listening room and a very open and dynamic sound.

Meticulous screening of the huge magnets of the bass drivers makes sure that they are not affected by other sources. And that they do not affect other equipment as well.

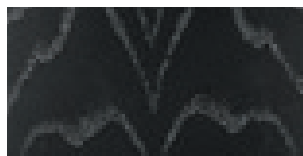
The graphs show how precise the T 1004 tweeter is compared with the typical competition: Faster and with less distortion in the time domain. The Audiovector T 1004 is the red graph.

The Avec speaker stand is one of the best sounding stands - not only for Audiovectors. It elegantly designed and made from pure aluminium.



COLOURS AND OPTIONS

All Audiovectors are available in the following selected and hand polished options.



American Maple



American Cherry



Rosewood



Black Stained Ash



Silver Silk Satin

SPECIFICATIONS

	K3 SU	K3	K1 SU	K1	K-C SU	K-C	K-SUB SU	K-SUB	K-X
Principle	2 way	2 way	3 way	4 way	5 way	6 way	10"	10"	2 way dipole/direct
Bas-princ.	horn	horn	reflex	reflex	reflex	reflex	vent	vent	reflex
Impedance	8 ohms	8 ohms	4 ohms	4 ohms	8 ohms	8 ohms	active	active	4 ohms
Sensitivity	90 dB	90 dB	87 dB	87 dB	90 dB	90 dB	active	active	87 dB
Power han.	200W	150W	120	100	200	150	350W	300W	
Frequency Response +/-2dB	40 - 22k	45 - 22k	54 - 22k	57 - 22k	44 - 22k	47 - 22k	20 - 180 Hz	22 - 180 Hz	52-22k
Connections	Bi-w.	Bi-w.	Bi-w.	Bi-w.	Bi-w.	Bi-w.	Phono	Phono	single-w.
WxHxD									
Size (cm)	14x98x25	14x98x25	14x26x22	14x26x22	45x16x26	45x16x26	34x37x38	34x37x38	27x10x22
Size (inches)	5,6x39x10	5,6x39x10	5,6x10x10	5,6x10x10	18x6x10	18x6x10	13x15x15	13x15x15	11x4x9
Weight/pair	26kilos 52lbs	24kilos 48lbs	8kilos 16lbs	9kilos 18lbs	8,5 17lbs	8,2 16lbs	19 38	18 36	8kilos 16lbs

* built-in 300 W power amplifier.

* built-in 300 W power amplifier.



F3/Audiovector · Orient plads 1 · DK-2300 Copenhagen Ø · Denmark

Tel.: +45 35 39 60 60 · fax: +45 35 35 59 69 · www.audiovector.com · mail@audiovector.com

Audiovector® is a registered Trademark.